



Wi-Fi 7

EasyMesh
— Compatible —

BE11000 Tri-Band Wi-Fi 7 Range Extender

Boost your Wi-Fi



RE655BE

BE11000 Tri-Band
Wi-Fi 7

2.5G Multi-Gigabit
Ethernet Port

320 MHz Channel
Bandwidth

Multi-Link
Operation^Δ

Highlights

Wi-Fi 7 — Wi-Fi Like Never Before



4.5× Faster Speeds to Power Your Devices[✳]

Multi-Link Operation (MLO) enables RE655BE to transmit data with Wi-Fi 7 clients across the 6 GHz, 5 GHz and 2.4 GHz bands simultaneously, delivering 4.5× faster Wi-Fi speeds than Wi-Fi 6/6E range extenders.[△]



Ultra Smooth Wi-Fi with 4× Lower Latency[☆]

4× lower latency than Wi-Fi 6/6E range extenders enables emerging applications like VR/AR, video conferencing, and online gaming to always run at top performance.



Unprecedented 11 Gbps 6-Stream Tri-Band Wi-Fi[†]

Wi-Fi 7 unleashes the full potential of the 6 GHz band with up to 320 MHz channels and 11 Gbps Wi-Fi speeds. Enjoy full access to 8K streaming and high-speed downloading.^{†△}

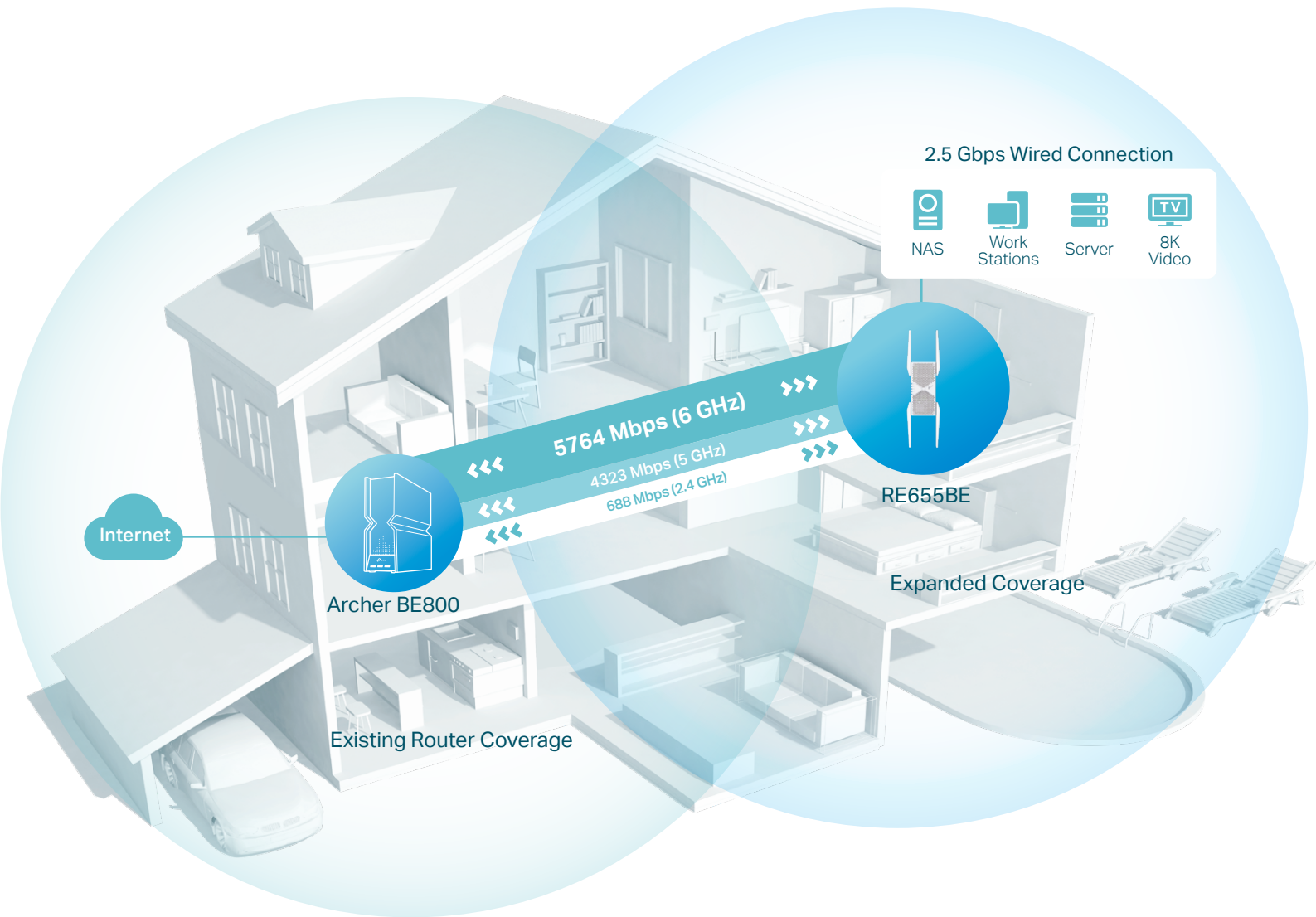


Higher Capacity for More Devices[†]

Communicates with multiple devices via 6 streams and tri-band simultaneously. Combined with its powerful CPU, Wi-Fi 7 provides congestion-free signals to your laptop, TV, thermostat, and baby monitor.

Highlights

Eliminate Wi-Fi Dead Zones with Unrivalled Wi-Fi 7



Flexible Whole Home Mesh Wi-Fi

More than a Traditional Wi-Fi Extender

Connect with an EasyMesh-compatible router to create a mesh network for seamless whole home coverage or any other Wi-Fi router to boost your Wi-Fi range.^{†*}



Wi-Fi Dead Zone Killer



Uninterrupted Streaming[§]



One Wi-Fi Name



Unified Management^{**}



Check the full list of TP-Link's EasyMesh-compatible extenders and routers at tp-link.com/easymesh/product-list/

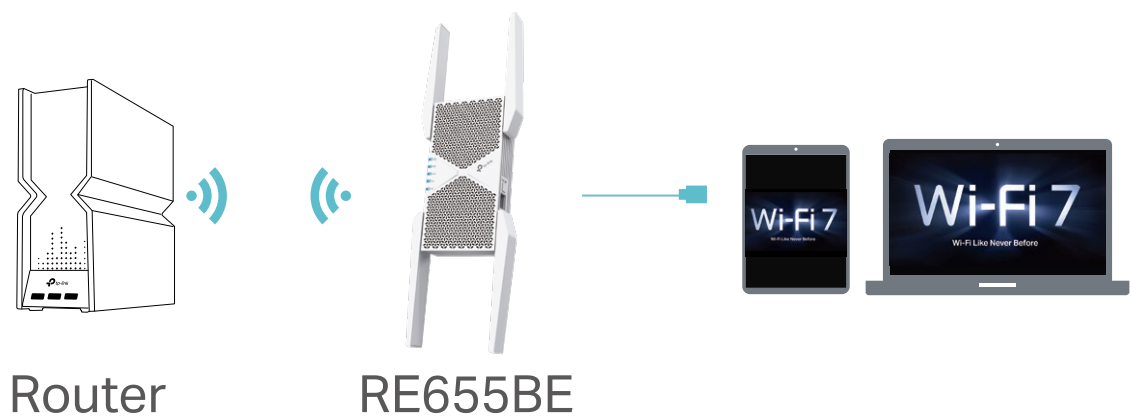
Highlights

BE11000 Tri-Band Wi-Fi 7 Range Extender

2.5 Gbps Wired Connection

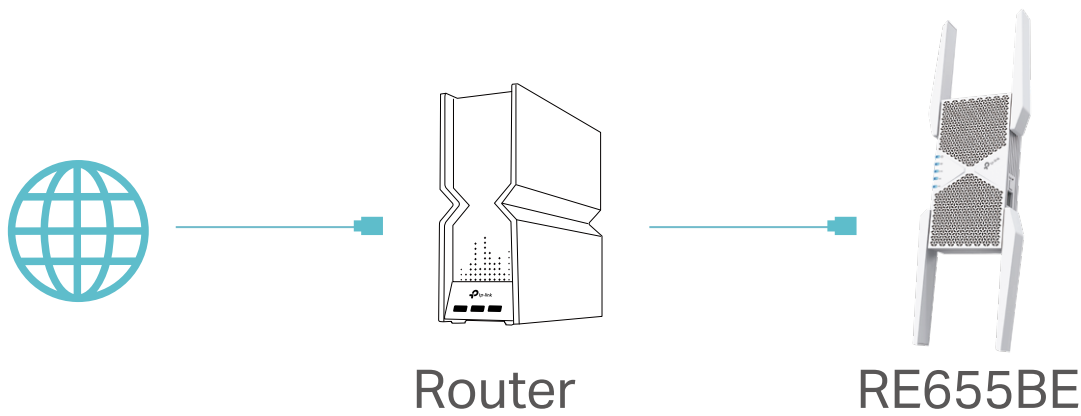
- **Range Extender Mode**

Plug your PC, smart TV, game console, or NAS device into the 2.5 Gbps port for a blazing-fast wired connection.



- **Access Point Mode**

Connect RE655BE with a router to easily turn that 2.5G wired connection into a high-speed tri-band wireless signal.



BE11000 Tri-Band Wi-Fi 7

5764 Mbps (6 GHz) + 4323 Mbps (5 GHz) + 688 Mbps (2.4 GHz).

2.5G Multi-Gigabit Ethernet Port

1 × 2.5 Gbps port ensures max flexibility and boosted throughput.

Multi-Link Operation

Simultaneously sends and receives data across bands and channels to increase throughput, reduce latency, and improve reliability.

320 MHz Channel Bandwidth

Expands bandwidth and enables more simultaneous transmissions.

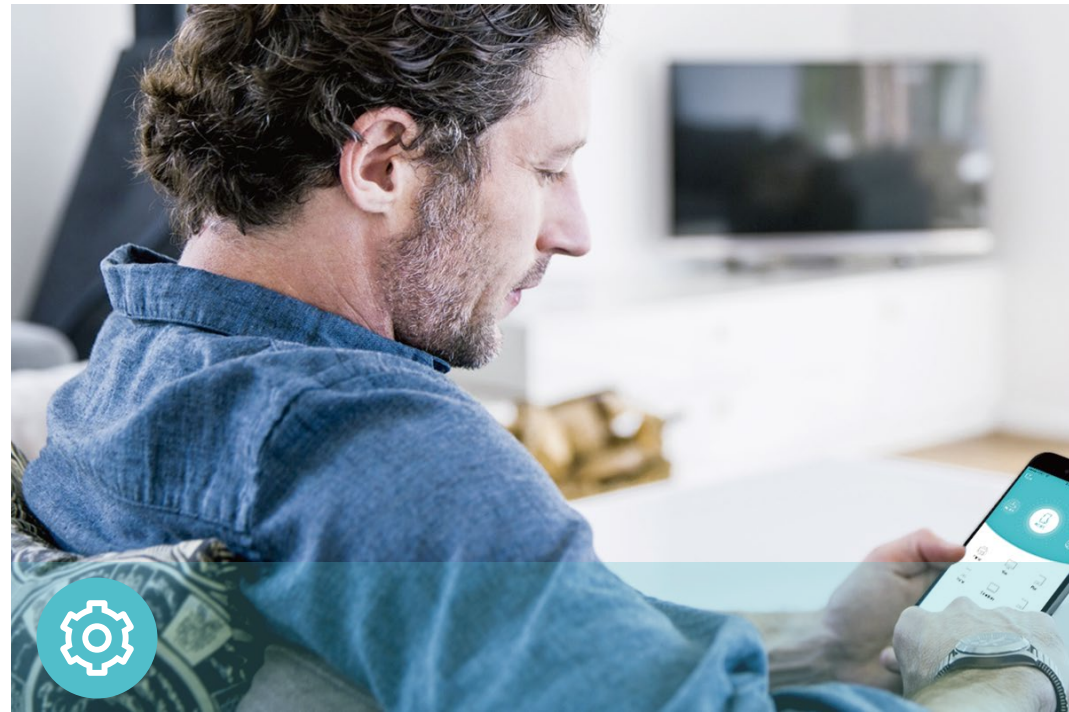
EasyMesh-Compatible

Works with different EasyMesh routers to form seamless whole home Mesh Wi-Fi.

Smart Roaming

Walk from room to room and stay connected with the fastest possible speeds.

Features



Ease of Use

- Intuitive Web UI– Ensures quick and simple installation without hassle
- Fast Setup – One-touch connection with the WPS button
- Hassle-free Management with Tether App – Network management is made easy with the TP-Link Tether App, available on any Android or iOS device
- Online Upgrade – Keeps you informed of the latest firmware and allows online updating on the web UI



Speed

- Ultimate Wireless Speed – Combined wireless speeds of up to 688 Mbps at 2.4 GHz, 4323 Mbps at 5 GHz, and 5764 Mbps at 6 GHz†
- Support Wi-Fi 7 – Turbocharge your devices with wireless speeds of up to 11 Gbps
- Adaptive Path Selection – Keep your network running at top-speed by automatically choosing the fastest connection path to the router



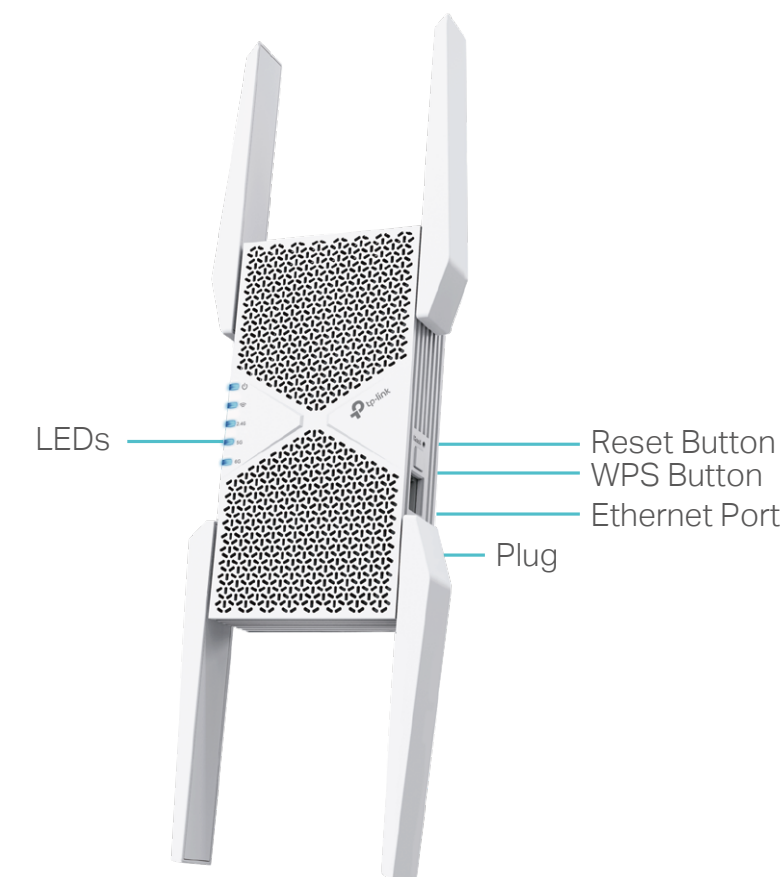
Reliability

- Simultaneous Tri-Band – Separate Wi-Fi bands enable more devices to connect to your network without a drop in performance
- Reliable Connection – External antennas for optimal Wi-Fi coverage and reliable wireless connections
- Ultra-Low Latency – Take advantage of ultra-low latency to enjoy smoother online experience

Specifications

Hardware

- Button: WPS Button, Reset Button
- Port: 2.5 Gigabit Ethernet Port
- Antennas: 4 External Antennas
- Dimensions: 4.2 × 1.5 × 6.3 in (107.2x39x161 mm)



Wireless

- **Wireless Standards:** IEEE 802.11ax/be 6 GHz, IEEE 802.11a/n/ac/ax/be 5 GHz, IEEE 802.11b/g/n/ax/be 2.4 GHz
- **Frequency:** 2.4 GHz, 5GHz, and 6 GHz
- **Signal Rate:** 688 Mbps at 2.4 GHz, 4323 Mbps at 5 GHz , 5764 Mbps at 6 GHz
- **Transmit Power:** FCC: ≤ 30 dBm (2.4 GHz), ≤ 30 dBm (5 GHz), ≤ 25 dBm (6 GHz)
- **Reception Sensitivity:**
2.4 GHz:
11ax HE20 MCS0: -95dBm, 11ax HE20 MCS11: -65dBm
11ax HE40 MCS0: -93dBm, 11ax HE40 MCS11: -63dBm
5 GHz:
11ax HE20 MCS0:-95dBm, 11ax HE20 MCS11:-64dBm
11ax HE40 MCS0:-93dBm, 11ax HE40 MCS11:-62dBm
11ax HE80 MCS0:-89dBm, 11ax HE80 MCS11:-59dBm
11ax HE160 MCS0:-85dBm, 11ax HE160 MCS11:-56dBm
11be EHT20 MCS13:-58dBm,11be EHT40 MCS13:-56dBm
11be EHT80 MCS13:-53dBm,11be EHT160 MCS13:-51dBm
6 GHz:
11ax HE20 MCS0:-95dBm, 11ax HE20 MCS11:-65dBm
11ax HE40 MCS0:-93dBm, 11ax HE40 MCS11:-63dBm

- 11ax HE80 MCS0:-90dBm, 11ax HE80 MCS11:-60dBm
- 11ax HE160 MCS0:-87dBm, 11ax HE160 MCS11:-58dBm
- 11be EHT20 MCS13:-60dBm,11be EHT40 MCS13:-58dBm
- 11be EHT80 MCS13:-54dBm,11be EHT160 MCS13:-52dBm
- 11be EHT320 MCS0:-84dBm,11be EHT320 MCS13:-48dBm
- **Wireless Function:** LED Control, Access Control, Power Schedule, Wi-Fi Coverage
- **Wireless Security:** Enhanced Open, WPA/WPA-PSK2, WPA2/WPA3 encryptions

Others

- Certification
FCC, RoHS
- System Requirements
Microsoft Edge, Firefox, Chrome, Safari, or other JavaScript-enabled browser

*You are recommended to use the latest version
- Package Contents
Range Extender RE655BE
Quick Installation Guide

†Maximum wireless signal rates are the physical rates derived from IEEE Standard 802.11 specifications. Higher capacity is based on laboratory test data, which analyzed the connections of different devices on the 6 GHz, 5 GHz, and 2.4 GHz bands simultaneously. These devices simulated a typical home scenario by running simultaneous applications in the same room that included 4K video, 1080p video, 720p video, file downloading, web browsing, IP cameras, and other IoT devices. Actual wireless data throughput, wireless coverage, and connected devices are not guaranteed and will vary as a result of internet service provider factors, network conditions, client limitations, and environmental factors, including building materials, obstacles, volume and density of traffic, and client location.

‡The product may not be compatible with routers or gateways with firmware that has been altered, is based on open source programs, or is non-standard orl outdated.

§Uninterrupted Streaming is designed for devices that support the 802.11k/v standard.

△Use of Wi-Fi 7 (802.11be), Wi-Fi 6 (802.11ax), and features including Multi-Link Operation (MLO), 320 MHz Bandwidth, 4K-QAM, Multi-RU, OFDMA, and MU-MIMO requires clients to also support the corresponding features. The 320 MHz bandwidth is only available on the 6 GHz band. Simultaneously, the 320 MHz bandwidth on the 6 GHz band and 160 MHz bandwidth on the 5 GHz band may be unavailable in some regions/countries due to regulatory restrictions. Double channel width and speed refer to 320 MHz compared to 160 MHz for Wi-Fi 6 range extenders.

*TP-Link EasyMesh-compatible products can network with other devices that use EasyMesh. Failed connections may be due to firmware conflicts of different vendors. The EasyMesh-compatible function is still being developed on some models and will be supported in subsequent software updates.

**Unified management is available for TP-Link EasyMesh-compatible devices. This feature is not guaranteed for devices from other vendors.

***Wi-Fi generations represent the wireless standard IEEE 802.11 a/b/g/n/ac/ax/be. All devices need to support 802.11 Wi-Fi protocols.

◇Use of WPA3 requires clients to also support the corresponding feature.

※4.5× faster Wi-Fi speed refers to the theoretical speeds of Wi-Fi 7 clients when connected to RE655BE compared with a Wi-Fi 6 or Wi-Fi 6E range extender.

☆4× Lower Latency refers to the latency improvement of Wi-Fi 7 range extenders compared to Wi-Fi 6/6E range extenders, based on laboratory test data.

Actual network speed may be limited by the rate of the product's Ethernet WAN or LAN port, the rate supported by the network cable, internet service provider factors, and other environmental conditions.

This range extender may not support all the mandatory features as ratified in the IEEE 802.11be specification.

This product is compatible with standardized EasyMesh technology but has not obtained the Wi-Fi EasyMesh™ certification.

Further software upgrades for feature availability may be required.

Pictures are for reference only. If there are any inconsistencies between the product image and the actual product, the actual product shall prevail.

©2023 TP-Link